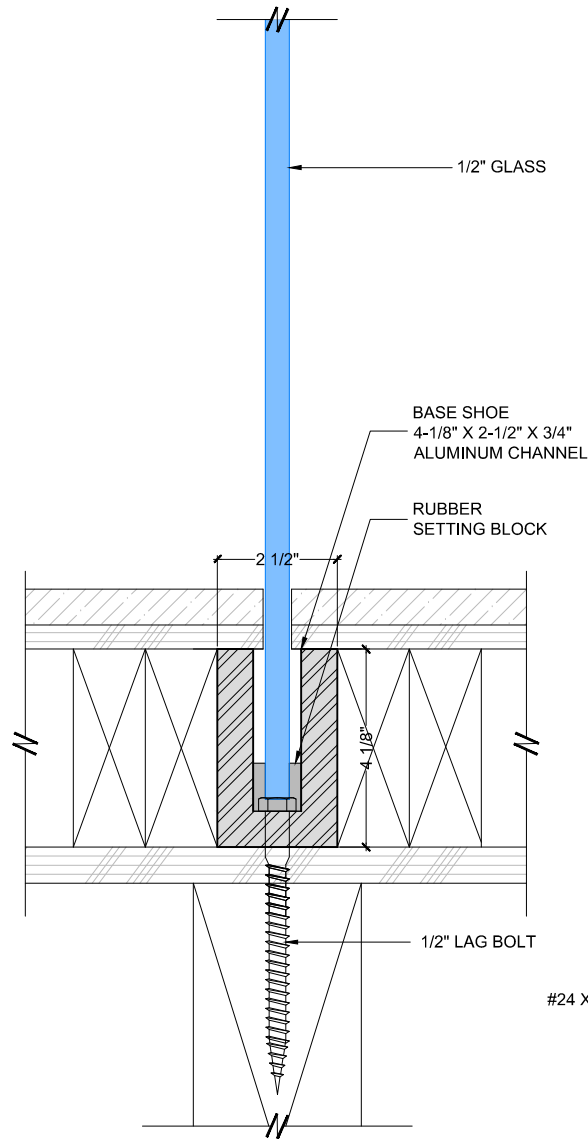
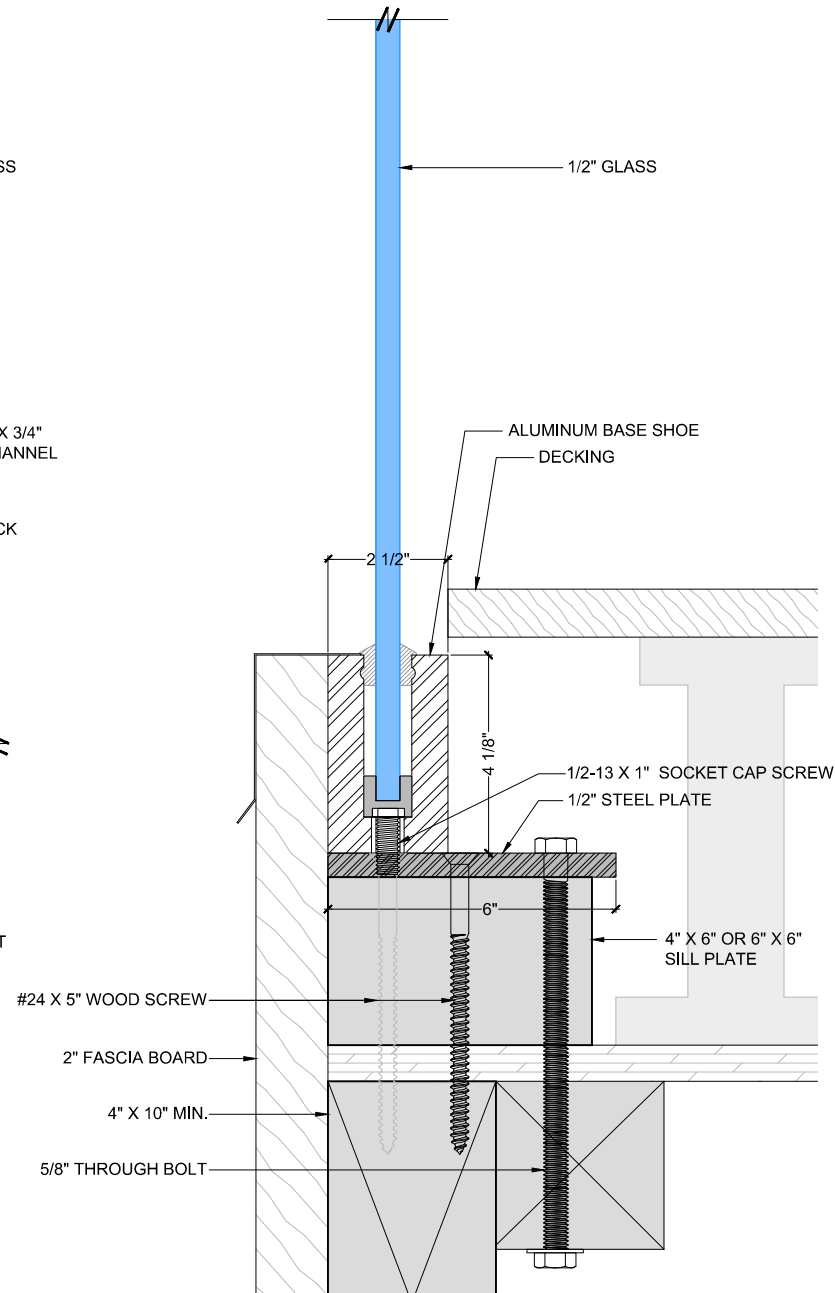


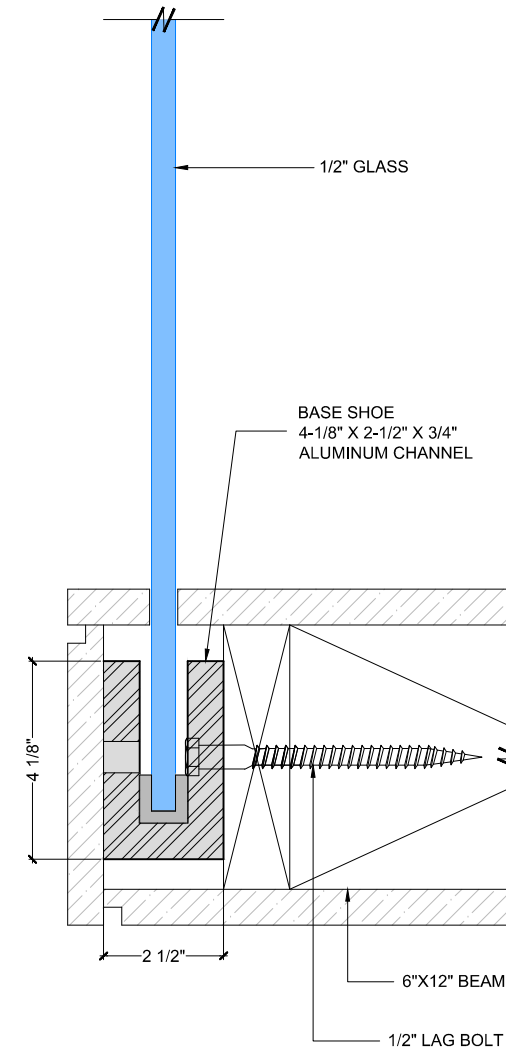
SURFACE MOUNTING
(EXPOSED)



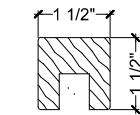
SURFACE MOUNTING
(CONCEALED)



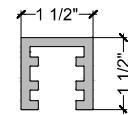
SURFACE MOUNTING TO
FLOATING WATERPROOF DECK



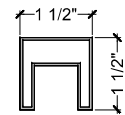
SIDE MOUNTING



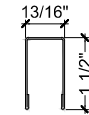
1-1/2" SQUARE
WOOD CAP



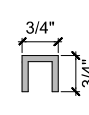
1-1/2" SQUARE
ALUMINUM CAP



1-1/2" SQUARE
SST CAP



1-1/2" X 13/16"
SST CAP



3/4" SQUARE
ALUMINUM CAP

**WENTWORTH
METAL WORKS**

1483 67TH STREET
EMERYVILLE, CA 94608
TEL: (510) 601-1240
FAX: (510) 601-1440

PROJECT:
SPECIFICATIONS

CONTACT:

DATE:
08/31/2021

NOTES:

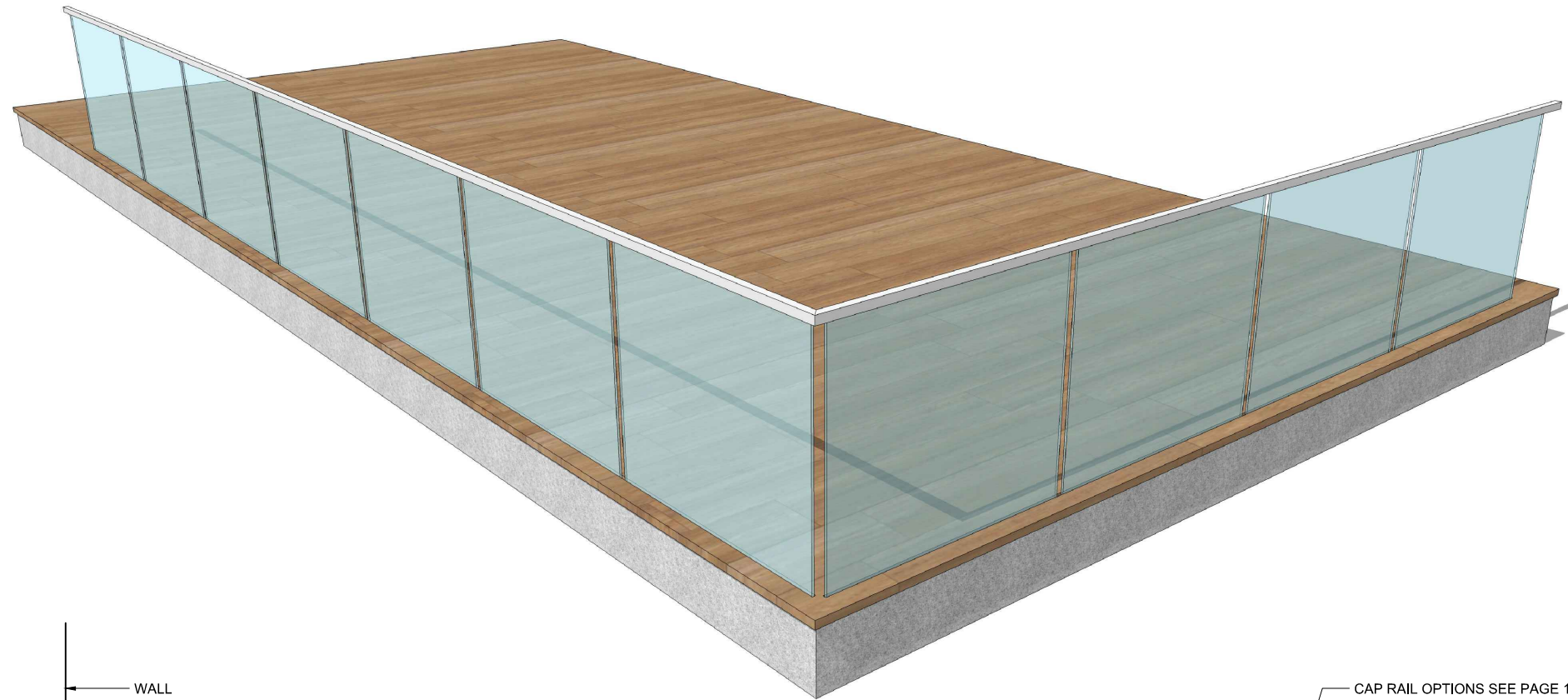
TITLE:
GLASS BASE SHOE
RAILING SYSTEM

SCALE:
3" = 1'-0"

DRAWN BY:
MY

DRAWING SHEET:

WMW - 15.0

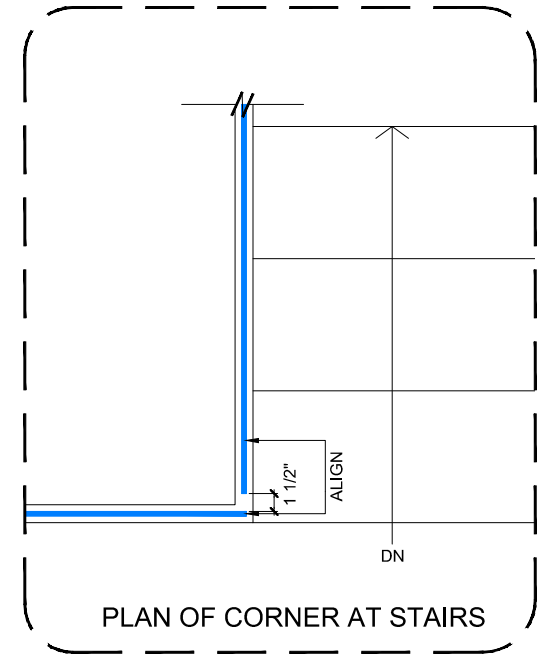
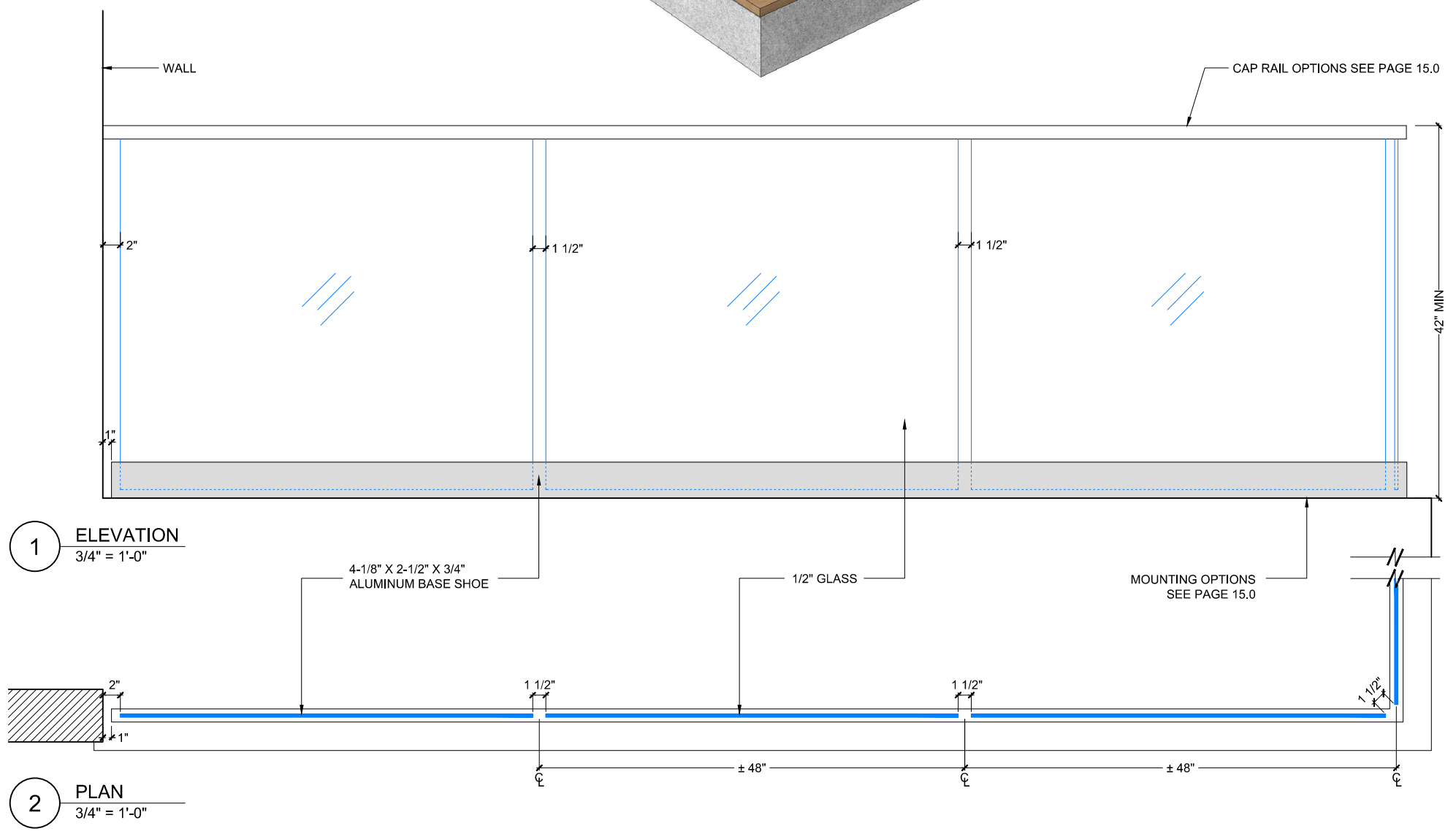


WENTWORTH METAL WORKS
 1483 67TH STREET
 EMERYVILLE, CA 94608
 TEL: (510) 601-1240
 FAX: (510) 601-1440

PROJECT:
 SPECIFICATIONS

CONTACT:

DATE:
 08/31/2021



TITLE:
 GLASS BASE SHOE RAILING SYSTEM

SCALE:
 3/4" = 1'-0"

DRAWN BY:
 MY

DRAWING SHEET:

WMW - 16.0